

ETI "PROFESSIONAL" SERIES 4-CELL STAINLESS STEEL PLATFORMS

Low profile **STAINLESS STEEL** electronic platforms with removable loading plate. Fitted with **IP68 STAINLESS STEEL** load cells. Suitable for creating scales and electronic weighing systems for all types of industrial and commercial applications. Standard version is with approved load cell.

MAIN FEATURES

- Fitted with 4 **STAINLESS STEEL** shear-beam OIML approved load cells each with 350 Ohm input resistance with protection against dust and immersion according to IP68 standards.
- Stainless steel bearing tubular structure, with removable stainless steel plate (except for the ELCI models which have a non removable plate) and IP67 junction box housing.
- Adjustable, stainless steel shock-proof jointed feet and level.
- Up to 15 Vdc power supply.
- Hermetic junction box and wiring cables with sheathing according to IP67 standards, and screened 5m long 6-pin cable with connectors for connection to the indicator.

OPTIONS ONLY AVAILABLE AT TIME OF ORDER

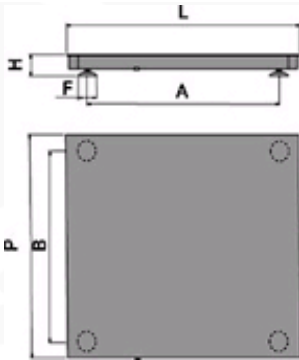
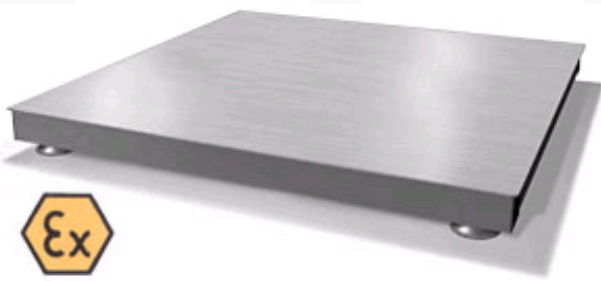
- Connection to the indicator and calibration with CE-M 3000e single range or 3000e+3000e dual range approval.
- High resolution models for internal factory use.

OPTIONS FOR ATEX VERSION

- CCATEX: ATEX certificate for each load cell.
- JB4QA: ATEX certified junction box.
- DCATEXMECH: Declaration of conformity of the whole system composed of PLATFORM + JUNCTION BOX + LOAD CELLS (only if the platform is ordered without the weight indicator; otherwise, refer to the certifications available for the indicator to which it will be connected).

EXTRAS AVAILABLE

- Indicator support stand.
- Frames for flush floor installation.
- Access ramps.
- Models with special sizes and capacities.



Mod./Dim.	L	P	H	A	B	F
ELCI	800	800	90	650	650	75
ETAI	1000	1000	90	850	850	75
ETBI	1250	1250	90	1070	1070	75
ETDI	1250	1500	110	1070	1320	75
ETEI	1500	1500	110	1320	1320	75
ETFI	1500	2000	130	1300	1800	75
ETGI	1500	2000	150	1300	1800	100
ETHI	1500	2500	180	1280	2280	100
ETLI	2000	2500	180	1780	2280	100

dimensions in mm

Available versions

Code	Dimensions (LxPxH)	Max Capacity kg	Standard Division g	CE-M Division g (*)	CE-M2 Division g (*)	HR Division g (*)
ELCI3	800x800x90	300	50	100	--	20
ELCI6	800x800x90	600	100	200	100-200	50
ELCI15	800x800x90	1500	200	500	200-500	100
ETAI3	1000x1000x90	300	50	100	--	20
ETAI6	1000x1000x90	600	100	200	100-200	50
ETAI15	1000x1000x90	1500	200	500	200-500	100
ETMI3	1000x1250x90	300	50	100	--	20
ETMI6	1000x1250x90	600	100	200	100-200	50
ETMI15	1000x1250x90	1500	200	500	200-500	100
ETBI3	1250x1250x90	300	50	100	--	20
ETBI6	1250x1250x90	600	100	200	100-200	50
ETBI15	1250x1250x90	1500	200	500	200-500	100
ETDI6	1250x1500x110	600	100	200	100-200	50
ETDI15	1250x1500x110	1500	200	500	200-500	100
ETDI30	1250x1500x110	3000	500	1000	500-1000	200
ETEI6	1500x1500x110	600	100	200	100-200	50
ETEI15	1500x1500x110	1500	200	500	200-500	100
ETEI30	1500x1500x110	3000	500	1000	500-1000	200

ETFI6	1500x2000x130	600	100	200	100-200	50
ETFI15	1500x2000x130	1500	200	500	200-500	100
ETFI30	1500x2000x130	3000	500	1000	500-1000	200
ETGI60	1500x2000x150	6000	1000	2000	1000-2000	500
ETHI30	1500x2500x180	3000	500	1000	--	200
ETHI60	1500x2500x180	6000	1000	2000	1000-2000	500
ETHI100	1500x2500x180	10000	2000	5000	2000-5000	1000
ETLI30	2000x2500x180	3000	500	1000	--	200
ETLI60	2000x2500x180	6000	1000	2000	1000-2000	500
ETLI100	2000x2500x180	10000	2000	5000	2000-5000	1000

(*) These divisions are obtainable only with the relative options

Options only available at time of order

Code	Description
ECEM1B	CE-M 3000e initial stamping for class III or IIII scales with capacity from 31 to 1500 kg
ECEM2B	CE-M 2x3000e initial stamping for class III or IIII scales with capacity from 31 to 1500 kg
ECEM1C	CE-M 3000e initial stamping for class III or IIII scales with capacity from 1501 to 6000 kg
ECEM2C	CE-M 2x3000e initial stamping for class III or IIII scales with capacity from 1501 to 6000 kg
ECEM1D	CE-M 3000e initial stamping for class III or IIII scales with capacity from 6001 to 15000 kg
ECEM2D	CE-M 2x3000e initial stamping for class III or IIII scales with capacity from 6001 to 15000 kg
ETHR	High resolution (HR) model
CCATEX	ATEX certificate for each load cell for the following categories: II 1G EExia IIC T6 (Ta -20÷+40°C) TX (Ta -20÷+65°C) II 1D tD A20 TX°C (Ta -20÷+40°C) TX°C (Ta -20÷+65°C).
JB4QA	Junction and equalisation box with 4 inputs, for ATEX environments, in IP67 ABS. Protection degree: II 2G EEx ib IIC T6 for gases. II 2D Ex tD A21 IP65 T115°C for dust.
DCATEXMECH	DECLARATION OF ATEX CONFORMITY OF WHOLE Ex II 2GD SYSTEM with relative WHOLE SYSTEM LABEL, for mechanical structure with ATEX load cells (each cell must be certified with CCATEX option).

Accessories

Code	Description
CSP42I	STAINLESS steel support column for the DFW, 3590, TRS series' indicators. Easy to install and to clean. Adjustable feet, guaranteeing the maximum stability.
ETATFI	STAINLESS STEEL frame for flush floor mounting 1000x1000 mm
ETMTFI	STAINLESS STEEL frame for flush floor mounting 1000x1250 mm
ETBTFI	STAINLESS STEEL frame for flush floor mounting 1250x1250 mm
ETDTFI	STAINLESS STEEL frame for flush floor mounting 1250x1500 mm
ETETFI	STAINLESS STEEL frame for flush floor mounting 1500x1500 mm
ETFTFI	STAINLESS STEEL frame kit for flush floor mounting 1500x2000 mm
ETHTFI	STAINLESS STEEL frame for flush floor mounting 1500x2500 mm
ETLTFI	STAINLESS STEEL frame for flush floor mounting 2000x2500 mm
ETARI	STAINLESS STEEL access ramp 1000x900 (lpx) for ETAI, ETMI, ELAI and ELMI
ETBRI	STAINLESS STEEL access ramp 1250x900 (lpx) for ETBI and ELBI
ETDRI	STAINLESS STEEL access ramp 1250x1100 (lpx) for ETDI and ELDI
ETERI	STAINLESS STEEL access ramp 1500x1100 (lpx) for ETEI and ELEI
ETPFI	STAINLESS STEEL plates for installing platforms (ELC, ETA, ELA, ETM, ETB, ELB, ETD, ELD, ETE, ELE, and ETF series) on the floor (set of 4)
ETPFIM20	STAINLESS STEEL plates for installing platforms (ETG, ETH and ETL series) on the floor (set of 4)

NOTES

ALWAYS MAKE SURE THAT THE RESULTING INCLINATION OF THE RAMP IS COMPATIBLE WITH THE SPECIFICATIONS OF THE VEHICLES USED FOR LOADING AND UNLOADING.

ALSO PROTECT THE PLATFORM SIDES BY MOUNTING, WHERE NECESSARY, APPROPRIATE ANGULAR PROTECTION PIECES (GUARD RAILS)